



GallerySystems

Collect. Manage. Share.

eMuseum

eMuseum

PUBLISH YOUR COLLECTIONS TO THE WEB

eMuseum is a web publishing system that integrates seamlessly with TMS to quickly and easily publish your collection to the web, mobile devices, and intranet. eMuseum is the heart of your online collection, delivering context-rich information on objects, exhibitions, and events. With eMuseum, you can access metrics and statistics to gain insight into how users interact with your collection. eMuseum's fully-documented API supports integration of TMS content with external applications and allows you to publish your collection information in new ways.

"There is no limit to the customization potential of eMuseum. As our project grows, TMS and eMuseum will continue to handle its increasing size and complexity."

- MUSEUM OF FINE ARTS, BOSTON



Why Choose eMuseum?

- ✓ Fully integrated with TMS
- ✓ Flexible API
- ✓ Powerful Searching
- ✓ Fully Customizable
- ✓ Interactive
- ✓ Mobile Enabled
- ✓ Multiple Media Support

eMuseum Features

eMuseum puts your collection in the spotlight, improving access and exposure.

∞ LIMITLESS POSSIBILITIES

eMuseum can be implemented as an intranet or as a public-facing website. Powerful, responsive design features offer virtually unlimited possibilities for displaying your collection information. The eMuseum API supports advanced linked data options, letting you integrate your collection with other systems and easily share with the public.

👥 COLLABORATE

eMuseum's My Collection feature allows users to curate and share their own online collections. Users can add an individual object or a complete search list to My Collection. For further collaboration, a shared My Collection can be edited by multiple users.

🔄 DYNAMIC DATA

Fully integrated with TMS, eMuseum becomes the content management system for your site, eliminating the need for costly, repetitive data extraction. Information, images and online collections are all easily managed from within TMS. Publish collection-related images, videos, documents and recordings easily with eMuseum.

🔥 PLATFORM INDEPENDENT & EXTENDIBLE

eMuseum's streamlined Java-based architecture allows it to run in any environment. With HTML, CSS, and JavaScript templates, your eMuseum site is completely customizable, taking any form and design you desire.

🔒 MULTI-LEVEL SECURITY

Create password-controlled levels of access to an intranet or website based on roles: curator, director, scholar, visitor, teacher, etc.

🌐 MULTILINGUAL FLEXIBILITY

eMuseum is fully Unicode compliant with support for multilingual publishing and searching. eMuseum offers complete localization options: users may select their preferred language directly, or eMuseum can be configured to automatically detect a user's preferred language or locale.

📊 ESSENTIAL ADMINISTRATIVE CONTROL

eMuseum's site administration and user management tools give you the ability to create user accounts and manage rights, schedule the automated refresh of your site's data, track site metrics, and more. Built-in SEO optimization supports improved findability of your site.

🔍 POWERFUL SEARCHING

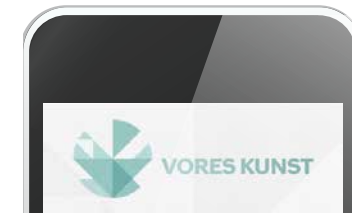
Search across every field in the eMuseum database using an intuitive Google-like search tool, or rely on the advanced multi-field search for more complex queries. eMuseum's dynamic filtering gives users the power to narrow their results with research-level precision. Filters can be applied based on geolocation, time period, and more. Contextual links and category tagging offer a practical layer of organization and searching to your collection data.

🎯 VALUABLE INSIGHTS

eMuseum tracks key metrics that can reveal the impact of your collection and the interests of your visitors. Along with conventional web metrics, eMuseum analytics measure collection-specific insights, such as object view counts and the most popular shared pages and images.

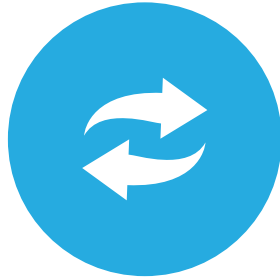
😊 AN ENGAGING USER EXPERIENCE

- Give users access to your collection on a full range of devices, including smart phones and tablets.
- Guide your audience through your collection via eMuseum's "You may also be interested in ..." and 'related object' functionality.
- Publish any type of digital media to eMuseum, from images and PDFs to interactive video, slideshows, and sound.
- Display your collection objects in a variety of ways: an informative list view, a detailed single-item view, attractive image displays, and interactive slideshow views.
- Include special image treatments and deliver high-resolution images enhanced by integration with deep zooming.
- Encourage interactivity via the My Collection feature so users can create and share personalized sets of data.
- Extend standard eMuseum functionality with social media integration and online tagging.
- Create featured 'collection highlights,' easily managed from within TMS.



eMuseum Services

Enhance your eMuseum presence with our selection of supportive services.



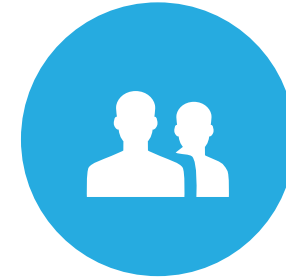
CONFIGURATION

Whether you're looking to restructure templates, reports, or your database—Gallery Systems will work with you to define your goals and implement a comprehensive solution.



LOOK & FEEL CUSTOMIZATION

We can match the visual appearance and styling of your eMuseum site to your currently existing website as a 5-day customization, creating a seamless experience as your visitors navigate from your main site to your collections.

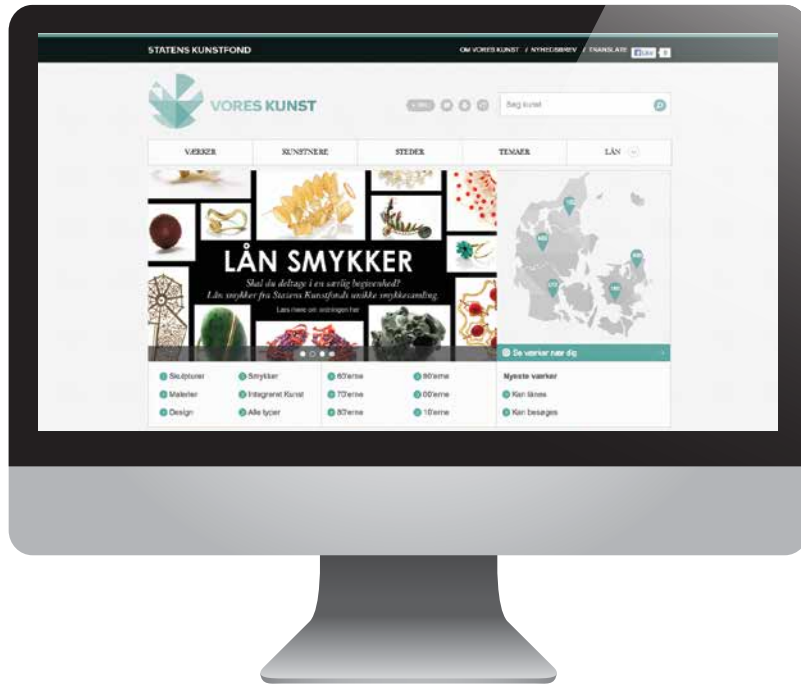


ADVANCED WEB DESIGN

Gallery Systems consults with our in-house design team, Web Atelier, as well as other top design firms to provide engaging, innovative web design solutions.

eMuseum Gallery

Visit these eMuseum websites to see how our powerful software brings collections to the web.



Danish Arts Agency

<http://vores.kunst.dk>

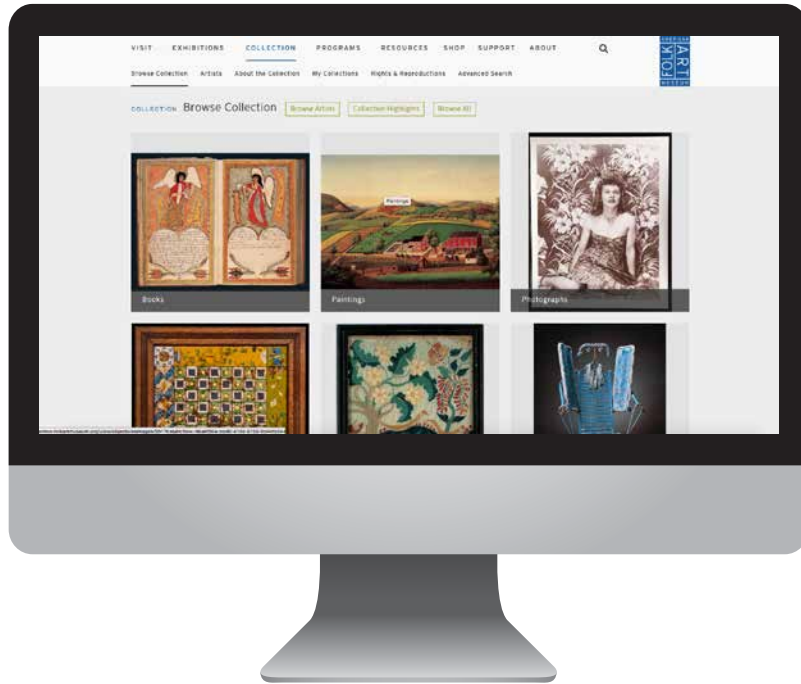


The Frick Collection

<http://collections.frick.org/>

eMuseum Gallery

Visit these eMuseum websites to see how our powerful software brings collections to the web.



American Folk Art Museum

<http://collection.folkartmuseum.org/>



Toledo Museum of Art

<http://classes.toledomuseum.org:8080/emuseum/>

System Requirements



Database and Software Server Operating System

eMuseum 5.0 is a Java based solution, so it can be hosted on any server operating system: Windows, Linux, or Unix*.

Because eMuseum 5.0 uses Hibernate, most popular database platforms can be supported. eMuseum currently is tested to work with Microsoft SQL server, Oracle, and MySQL.

** Licenses for supported operating systems and database servers must be purchased and installed separately. The choice of database management system will determine which server operating system is used.*

Both Microsoft and Oracle require the purchase and use of a Processor license (or licenses) when using their respective database servers with a web-accessible application (such as eMuseum).



Web Server Configuration

The following hardware and software components are required prior to installing eMuseum:

Hardware Requirements

- Minimum 200 MB of free disk space for the application*.
- Recommended minimum 1 GB RAM

Supported Operating Systems

- Microsoft Windows Server 2008; Linux OS (tested distributions include Red Hat and SUSE Enterprise Server)

Supported Database Platforms

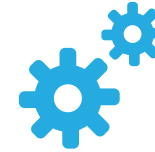
- SQL Server 2008 R2; SQL Server Express; Oracle 10i; MySQL 5.x

Supported Web Application Servers

- Apache Tomcat 6 or higher (tested up to Tomcat 8); IBM WebSphere Application Server 6.1 with Fix Pack 9 and PK48169

Additional Requirements

- Sun Java Development Kit 5.0 Update 10 or higher
- Java Cryptography Extension (JCE)
- Appropriate JDBC Driver



Client Configuration

eMuseum is designed to be accessed via any modern web browser, such as Internet Explorer, Safari (MAC), Firefox or Chrome. No additional client software is required to use eMuseum.